

# Did You Know...

information you can use



## System Maintenance: Points to Remember

In general, your STINGRAY® Parts Washer is not maintenance-intensive. A few key items, however, need regular, scheduled care. Good maintenance is essential for optimal cleaning results, as well as reliable operation of the STINGRAY Parts Washer.

### **Heating System**

If a gas or LP Forced Air Burner heats your STINGRAY Parts Washer, the following maintenance is recommended. In order to remove dust and dirt, clean the Air Intake on the Burner Blower Motor with a compressed-air blower or soft brush. Be sure to note the settings of your burner so that you can re-adjust after cleaning.



Because burner service is harder to obtain during the winter, now is a good time to perform preventive maintenance. STINGRAY keeps many of the replacement parts for the burners in stock. Please call MART Tech Services for assistance.

### **Turntable and Drive Assembly**

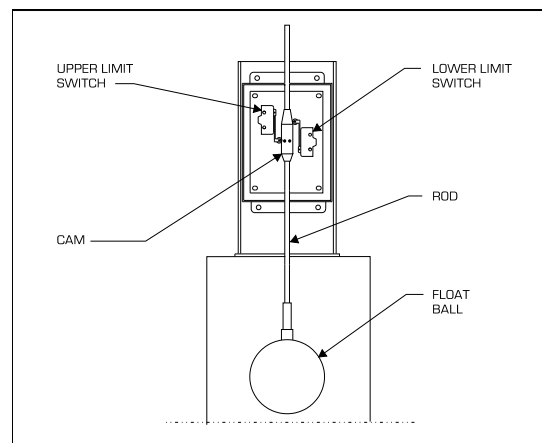
It is recommended that you grease the upper and lower Turntable Bearings every 8 hours of use or at the end of every shift of use. Please note that if you have a SR30 or SR40 parts washer, you have a sealed turntable bearing system that should be greased every six months.

Grease the upper and lower Turntable Bearings only with **Lubriplate 1444** (Part#51810). The Turntable Drive Bearings should be greased every month with **Mobilith XHP222** (Part#48270). Inspect the torque limiter clutch on the turntable drive to be sure it is not rusted. A rusted clutch plate could prevent slippage when a part falls and jams the turntable. Door bearings should be greased with **Mobilith XHP222** every 6 months.



### **Float Assembly**

Inspect the Float System periodically. Make sure the rod moves up and down freely without excessive play and that both limit switches are making good contact with the cam. Inspect the ball and rod and clean any dirt or sludge that may cling to them and prevent the smooth operation of the system.



**MART**  
**TECH SERVICES**  
(800) 543-6278  
www.marttechservices.com

**Service and Support**  
Our offices are open M-F from  
8AM to 5PM CST

**STINGRAY**  
Parts Washers  
(314) 447-9000  
www.stingraypartswasher.com