

Power-Kleen I

Iron and Steel

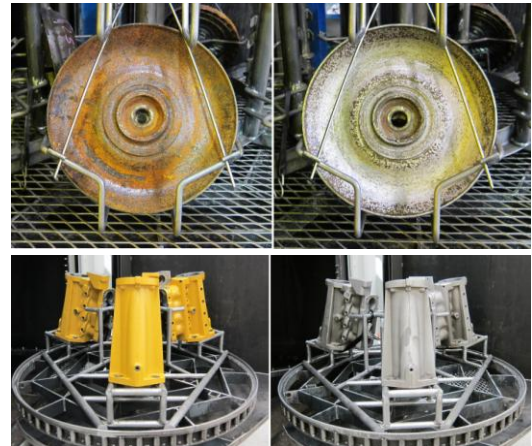
Heavy-Duty, Low Foaming Detergent for Iron and Steel

GENERAL DESCRIPTION

Power-Kleen I is a 100% active concentrated cleaner designed specifically for high pressure & temperature spray washing of iron & steel. The powerful cleaning action becomes more effective at higher temperatures Power Kleen I is an aggressive detergent that tackles the toughest soils on iron & steel.

ADVANTAGES

- Maximum strength, advanced cleaning detergent for removing oil deposits, heavy greases, scale, rust, paint, carbon based soils, engine varnish and other soils
- 100% Active Concentrated chemical with no fillers
- Unsurpassed Cleaning Power for Iron & Steel
- Activated rust inhibitors protect your washer & unrinsed parts
- Built-in defoamant reduces the need for additional anti-foam products.



BEFORE

AFTER

APPLICATION GUIDELINES

Power-Kleen I is designed for use at low concentrations:

- Washing light soils 3.0 oz/gal to 5.0 oz/gal
- Washing heavier soils 6.0 oz/gal to 10.0 oz/gal
- Paint and Rust Removal 10.0 oz/gal to 12.0 oz/gal
- Useable temperature range 150° - 210°. Higher temperatures increase effectiveness.

PHYSICAL PROPERTIES (TYPICAL DATA)

Form.....Powder
Color (concentrate)Off White
Base.....Sodium Hydroxide

pH range of Working Solution.....13-14.0
pH of concentrate.....14.0



2450 Adie Road, Maryland Heights, MO 63043 USA
Ph 800-543-6278 Fax 314-567-6318
E-mail service@stingwash.com Website www.stingray.com



MIXING INSTRUCTIONS

For StingRay / MART Parts Washers: Heat the water to at least 160°F. Open and secure the Parts Washer door. Carefully distribute ½ to 8 oz of detergent per gallon of water on the drip pan beneath the turntable in the washer. Close the washer door and start the pump to dissolve the detergent.

For all other cleaning equipment: Add chemical carefully and as instructed by the machine manufacturer. Avoid “dumping” of chemical directly into washer reservoir. Violent exothermic (heat released) reactions, splashing of heated chemical solutions and the premature release of fumes may occur. If chemical must be added to the solution, slowly pour chemical into solution while continuously mixing.

HEALTH AND SAFETY

Avoid contact with chemical and solution. Avoid inhaling dust and fumes. Wear eye protection and gloves when handling chemicals. Instructions can also be found on the Power-Kleen I label, StingRay Tech Services Website or reference the StingRay / MART Parts Washer Operating Manual.

Get the most recent MSDS from our website at www.stingray.com or call StingRay Tech Services

PACKAGING

Part Number	Package Size
52783	50 lb Pail
52784	500 lb Drum

- Shipping: Ships Truck
- For additional information, please contact:
StingRay Tech Services at 1-800-543-6278 or visit our Website: www.stingray.com

MONITORING CONCENTRATION

Power-Kleen I concentration should be monitored by titration using the Power Kleen Titration Kit P/N 22200.

This test, which consists of an “indicator” (Phenolphthalein) and a “titrant” (acid), determines the concentration of POWER KLEEN I in the solution. **Caution:** Wear eye protection and gloves during the test.

Notes: Cool solution to room temperature.

For better accuracy and repeatability:

- Run the solution through a coffee filter to remove impurities.
- Clean the Test Tube thoroughly before each use.
- Hold the acid bottle vertically to ensure consistent droplet size.

Procedure:

- Pour 12.5 ml of washer solution to the mark on the Test Tube.
- If solution is murky, add small amount of water for clarification.
- Add 5 drops of Phenolphthalein Indicator. Solution will turn pink.
- Add acid, one drop at a time, and count the drops while swirling the solution in the test tube until pink color is completely gone.
- Reading: Approximate Concentration of Power Kleen I, expressed as oz/gal, equals (number of drops) divided by 10.
Concentration Formula: Drops of Acid / 10 = oz per gallon
- Pour test solution into machine reservoir, wash Test Tube, and repeat to confirm results.



Titration Kit #22200

Drops of Acid	30	40	50	60	70	80	90	100
Power-Kleen I Ounces per gallon	3 oz	4 oz	5 oz	6 oz	7 oz	8 oz	9 oz	10 oz

Acid Count VS Concentration Chart: Count Drops of Acid, find concentration in table.



2450 Adie Road, Maryland Heights, MO 63043 USA

Ph 800-543-6278 Fax 314-567-6318

E-mail service@stingwash.com Website www.stingray.com