

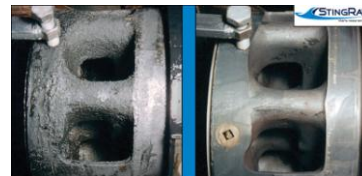
# Power-Kleen CR

## Carbon Removal Additive

Power-Kleen CR is a biodegradable, no-VOC, low ph additive for assisting Power Kleen detergents in tough carbon, grease, and stubborn soils removal task. It safe for use with steel, iron, aluminum, other soft metals, and plastics.

### Power-Kleen CR

- Formulated with surfactants for removal of carbon, grease, and soils
- Non-VOC by CARB definition per ASTM D1298
- Designed with ingredients that are biodegradable and low toxicity to protect your workers and be green to the environment
- Excellent for cleaning in industrial equipment rebuilds
- Designed to improve cleaning at temperatures above 160°
- Contains no silicone to interfere with new coatings or paint



BEFORE

AFTER

### APPLICATION GUIDELINES

Power-Kleen CR is designed for use with any of the Power-Kleen Detergents:

- Washing light soils 50% of amount detergent added to the reservoir
- Washing heavier soils 100% of amount detergent added to the reservoir
- Useable temperature range 160° - 190°. Higher temperatures increase effectiveness

### Technical Data

Form:	Liquid	VOC:	None (CARB definition- ASTM D1298)
Color:	Hazy	Flash Point	>200 deg.F
pH (as is)	10-11	Boiling Point	>200 deg F
Storage Stability	Excellent, keep from freezing		

### MIXING INSTRUCTIONS

**For StingRay / MART Parts Washers:** Heat the water to at least 160°F. Open and secure the Parts Washer door. Carefully and slowly pour ½ to 8 oz of additive per gallon of water over the door frame and through the expanded metal internal reservoir cover in the washer. Close the washer door and start the pump to mix the detergent.

**For all other cleaning equipment:** Add chemical carefully and as instructed by the machine manufacturer. Avoid “dumping” of chemical directly into washer reservoir. Violent exothermic (heat released) reactions, splashing of heated chemical solutions and the premature release of fumes may occur. If chemical must be added to the solution, slowly pour chemical into solution while continuously mixing.



2450 Adie Road, Maryland Heights, MO 63043 USA  
Ph 800-543-6278 Fax 314-567-6318  
E-mail [service@stingwash.com](mailto:service@stingwash.com) Website [www.stingray.com](http://www.stingray.com)

## PACKAGING

Part Number	Package Size
85202	1 gallon
85203	5 gallon
85204	55 gallon

- Shipping: Ships UPS or Truck

## HEALTH AND SAFETY

Avoid contact with chemical and solution. Avoid inhaling fumes. Instructions can also be found on the Power-Kleen CR label, StingRay Tech Services Website or reference the StingRay/MART Parts Washer Operating Manual. Get the most recent MSDS from our website at [www.stingrayservice.com](http://www.stingrayservice.com) or call StingRay Tech Services.

---

---