

Power-Kleen III L

Electric & Aerospace Sodium-Free and High-Rinse

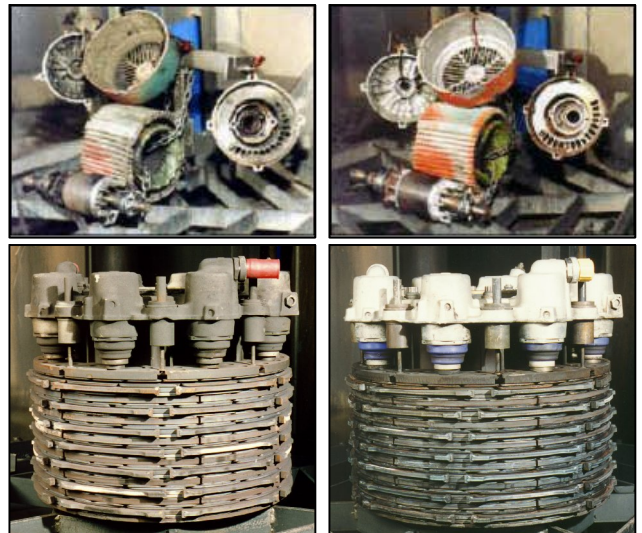
Highly Rinsing, Low Foaming Detergent Safe for Aluminum, Aircraft Parts, Electric Motors, and Multi-metals

GENERAL DESCRIPTION

Power-Kleen III L is a 100% active concentrated cleaner designed specifically for high pressure & high temperature spray washing of Aluminum, Aircraft Parts, Electric Motors, and Multi-metals. The powerful cleaning action becomes more effective at higher temperatures. It is safe for use on all metals & electric motor windings requiring no extra steps for most applications. Power Kleen III L is best used in cleaning applications where an excellent rinse with less aggressive cleaning is required. Potassium base leaves parts residue-free after rinsing.

ADVANTAGES

- Deep Cleaning detergent for oil, greases, brake dust, and other soils from non-ferrous metals
- 100% Active Concentrated chemical with no fillers
- Formulated with rust inhibitors to protect your washer & unrinsed parts
- Low foaming with built-in defoamant is effective with synthetic products.
- Super rinseability provides Low electrical conductivity and complete chemical removal with no staining or residues. Ideal for washing electrical motor armatures and other electrical parts.
- Aviation approvals – Douglas Aircraft CSD #1, Boeing D6-17487 Revision L, AMS 1526B Cleaner



APPLICATION GUIDELINES

Power-Kleen III L is designed for use at low concentrations:

- Washing light soils/High Rinsing 2.0 oz/gal to 4.0 oz/gal
- Washing heavier soils 5.0 oz/gal to 8.0 oz/gal
- Useable temperature range 150° - 210°. Higher temperatures increase effectiveness.

PHYSICAL PROPERTIES (TYPICAL DATA)

Form.....Liquid
Color (concentrate)Light Amber
Base.....Potassium Metasilicate

pH range of Working Solution.....11.5-12
pH of concentrate.....12



2450 Adie Road Suite 100 Maryland Heights, MO 63043
Ph 800-543-6278 Fax 314-567-6318
Website www.marttechservices.com

Power-Kleen III L

Electric & Aerospace Sodium-Free

MIXING INSTRUCTIONS

For MART Power Washers: Heat the water to at least 160°F. Open and secure the Power Washer door. Carefully and slowly pour ½ to 8 oz of detergent per gallon of water over the door frame and through the expanded metal internal reservoir cover in the washer. Close the washer door and start the pump to mix the detergent.

For all other cleaning equipment: Add chemical carefully and as instructed by the machine manufacturer. Avoid “dumping” of chemical directly into washer reservoir. Violent exothermic (heat released) reactions, splashing of heated chemical solutions and the premature release of fumes may occur. If chemical must be added to the solution, slowly pour chemical into solution while continuously mixing.

HEALTH AND SAFETY

Avoid contact with chemical and solution. Avoid inhaling fumes. Instructions can also be found on the Power-Kleen III L label, MART Tech Services Website or reference the MART Power Washer Operating Manual. Get the most recent MSDS from our website at www.marttechservices.com or call MART Tech Services

PACKAGING

Part Number	Package Size
52795	5 gal Pail
52796	55 gal Drum

- Shipping: Ships UPS or Truck, Next day Available
- For additional information, please contact:
MART Tech Services at 1-800-543-6278 or
visit our Website: www.marttechservices.com

MONITORING CONCENTRATION

Power-Kleen III L concentration should be monitored by Titration using the MART titration Kit P/N 22200.

This test, which consists of an “indicator” (Phenolphthalein) and a “titrant” (acid), determines the concentration of POWER KLEEN III L in the solution. **Caution:** Wear eye protection and gloves during the test.

Notes: Cool solution to room temperature.

For better accuracy and repeatability:

- Run the solution through a coffee filter to remove impurities.
- Clean the Test Tube thoroughly before each use.
- Hold the acid bottle vertically to ensure consistent droplet size.

Procedure:

- Pour 12.5 ml of washer solution to the mark on the Test Tube.
- If solution is murky, add small amount of water for clarification.
- Add 5 drops of Phenolphthalein Indicator. Solution will turn pink.
- Add acid, one drop at a time, and count the drops while swirling the solution in the test tube until pink color is completely gone.
- Reading: Approximate Concentration of Power Kleen III L, expressed as oz/gal, equals (number of drops) divided by 2. Concentration Formula: Drops of Acid / 2 = oz per gallon
- Pour test solution into machine reservoir, wash Test Tube, and repeat to confirm results.



Titration Kit #22200

Drops of Acid	6	8	10	12	14	16
Power-Kleen III L Ounces per gallon	3 oz	4 oz	5 oz	6 oz	7 oz	8 oz

Acid Count VS Concentration Chart: Count Drops of Acid, find concentration in table.