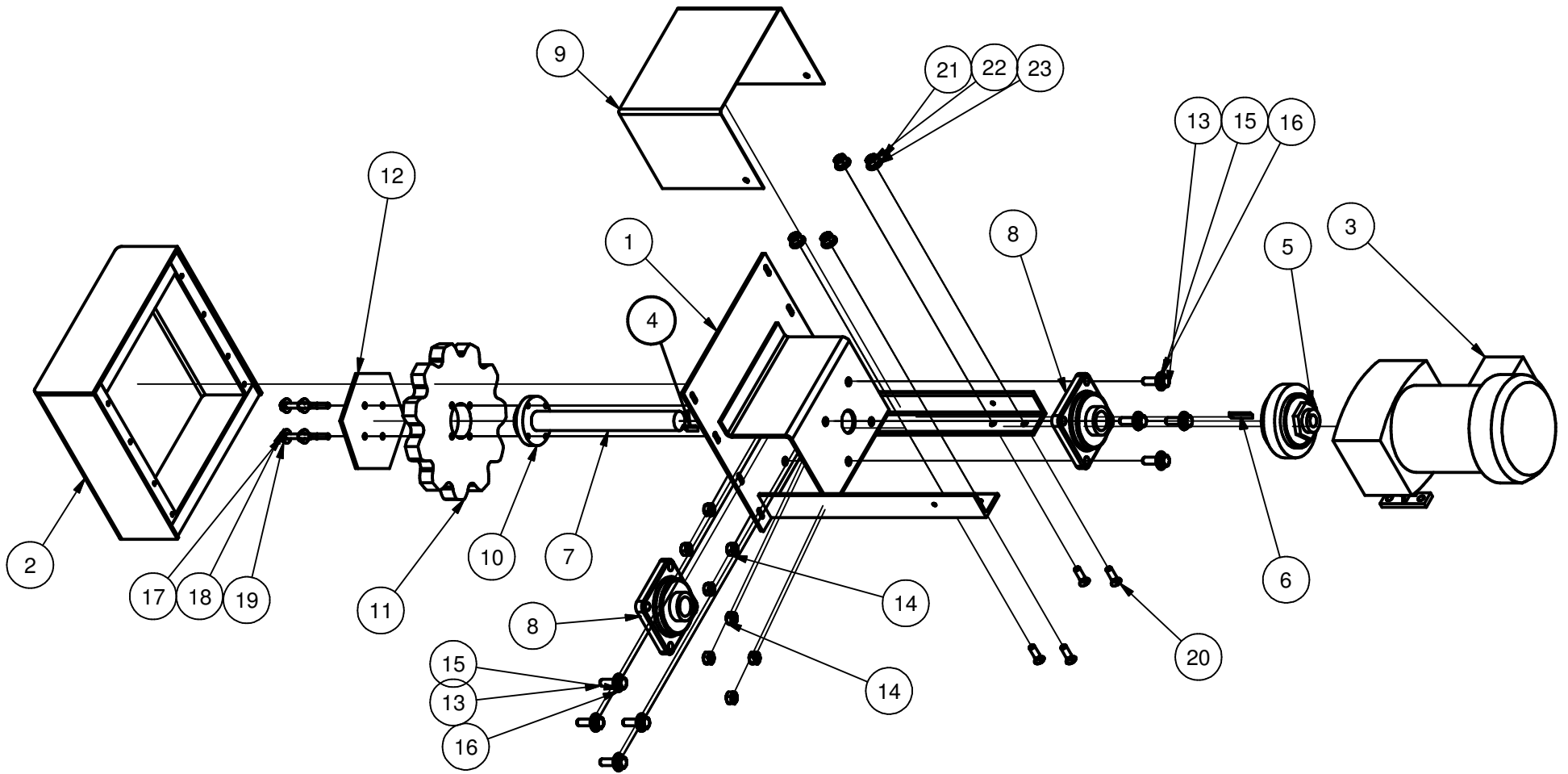


STANDARD 900 IN/LB Parts List				HEAVY DUTY 1200 IN/LB Parts List			
ITEM	QTY	PART #	DESCRIPTION	ITEM	QTY	PART #	DESCRIPTION
1	1	68005	ASSY,FRAME,SPROCKET DRIVE,900-IN LB,STL	1	1	68007	ASSY,FRAME,SPROCKET DRIVE,1200-IN LB
1A	1	68005SS	ASSY,FRAME,SPROCKET DRIVE,900-IN LB,SS	2	1	68006	ASSY,TTBL DRIVE,BOX
2	1	68006	ASSY,TTBL DRIVE,BOX,STL	3	1		GEARMOTOR
2A	1	68006SS	ASSY,TTBL DRIVE BOX,SS	3A	1	51860	GEARMOTOR,1/3HP,14RPM,1PHASE,NO BRAKE
3	1	51815	GEARMOTOR,1/4HP,12RPM	3B	1	51861	GEARMOTOR,1/3HP,14RPM,1PHASE,W/ BRAKE
4	1	69774	KEY,1/4 X 1/4 X 2	3C	1	51862	GEARMOTOR,1/3HP,14RPM,3PHASE,NO BRAKE
5	1	48897	TORQUE LIMITER	3D	1	51863	GEARMOTOR,1/3HP,14RPM,3PHASE,W/ BRAKE
6	1	68013	KEY,1/4 X 1/4 X 1	4	1	68013	KEY,1/4 X 1/4 X 1
7	1	68695	SHAFT,TTBL DRIVE,STL	5	1	50050	TORQUE LIMITER
7A	1	68695SS	SHAFT,TTBL DRIVE,SS	6	1	68013	KEY,1/4 X 1/4 X 1
8	2	42030	BEARING,FLANGE,BALL	7	1	68695	SHAFT,TTBL DRIVE
9	1	68702	GUARD,TTBL DRIVE	8	2	42030	BEARING,FLANGE,BALL
10	1	41980	HUB,REDI,1-1/4x1/4x1/8,STL	9	1	68720	GUARD,LEFT,TTBL DRIVE,1200 INLB
10A	1	50274	HUB,REDI,1-1/4x1/4x1/8,SS	9-2	1	68721	GUARD,RIGHT,TTBL DRIVE,1200 INLB
11	1	41970	SPROCKET,TTBL DRIVE,11T,UHMW	10	1	41980	HUB,REDI,1-1/4x1/4x1/8
12	1	68062	SUPPORT,SPROCKET,TTBL DRIVE,STL	11	1	41970	SPROCKET,TTBL DRIVE,11T,UHMW
12A	1	68062SS	SUPPORT,SPROCKET,TTBL DRIVE,SS	12	1	68062	SUPPORT,SPROCKET,TTBL DRIVE,STL
13	8	21200	BOLT,HEX,STL,7/16-14 X 1-1/2	13	8	21200	BOLT,HEX,STL,7/16-14 X 1-1/2
14	8	29200	NUT,HEX,STL,7/16-14	14	8	29200	NUT,HEX,STL,7/16-14
15	8	27430	WASHER,LOCK,7/16"	15	8	27430	WASHER,LOCK,7/16"
16	8	26290	WASHER,FLAT,7/16",STL	16	8	26290	WASHER,FLAT,7/16",STL
17	4	26270	WASHER,FLAT,5/16",STL	17	4	26270	WASHER,FLAT,5/16",STL
17A	4	50874	WASHERFLAT,5/16",SS	18	4	27410	WASHER,LOCK,5/16,STL
18	4	27410	WASHER,LOCK,5/16,STL	19	4	45140	BOLT,HEX,STL,5/16-24 X 2
18A	4	27410	WASHER,LOCK,5/16",SS	20	4	21120	BOLT,HEX,STL,5/16-18 X 1-1/2
19	4	45140	BOLT,HEX,5/16-24 X 2,STL	21	4	26270	WASHER,FLAT,5/16",STL
19A	4	49475	BOLT,HEX,5/16-24 X 2,SS	22	4	27410	WASHER,LOCK,5/16,STL
20	4	45130	SCREW,MACHINE,FLAT HD,3/8-16x 1 1/4"	23	4	29160	NUT,HEX,STL,5/16-18,STL
21	4	26260	WASHER,FLAT,3/8,STL				
22	4	27400	WASHER,LOCK,3/8,STL				
23	4	29150	NUT,HEX,STL,3/8-16,STL				

USE "A" PART NUMBERS FOR STAINLESS STEEL MACHINES

THIS DRAWING/PRINT IS THE PROPERTY OF THE MART CORPORATION ANY REPRODUCTION OR USES OF THIS DRAWING/PRINT, WITHOUT THE EXPRESS WRITTEN CONSENT OF THE MART CORPORATION IS PROHIBITED

<b>MART</b>			
THE CORPORATION			ST. LOUIS MO.
DECIMAL ±.010	TITLE ASSY,900/1200 INLB TTBL DRIVE,EXP VIEW		
FRACTIONAL ± 1/16	SIZE A	DWG NO 68020EV	REV
ANGULAR ±1°	DRAWN BY SCHILLER 3/8/04		SHEET 1 OF 2



**MART** CORPORATION ST. LOUIS MO.

DECIMAL ±.010	TITLE ASSY, 900/1200 INLB TTBL DRIVE, EXP VIEW		
FRACTIONAL ± 1/16	SIZE A	DWG NO 68020EV	REV
ANGULAR ±1°	DRAWN BY SCHILLER 3/8/04		SHEET 2 OF 2

THIS DRAWING/PRINT IS THE PROPERTY OF THE MART CORPORATION ANY REPRODUCTION OR USES OF THIS DRAWING/PRINT, WITHOUT THE EXPRESS WRITTEN CONSENT OF THE MART CORPORATION IS PROHIBITED